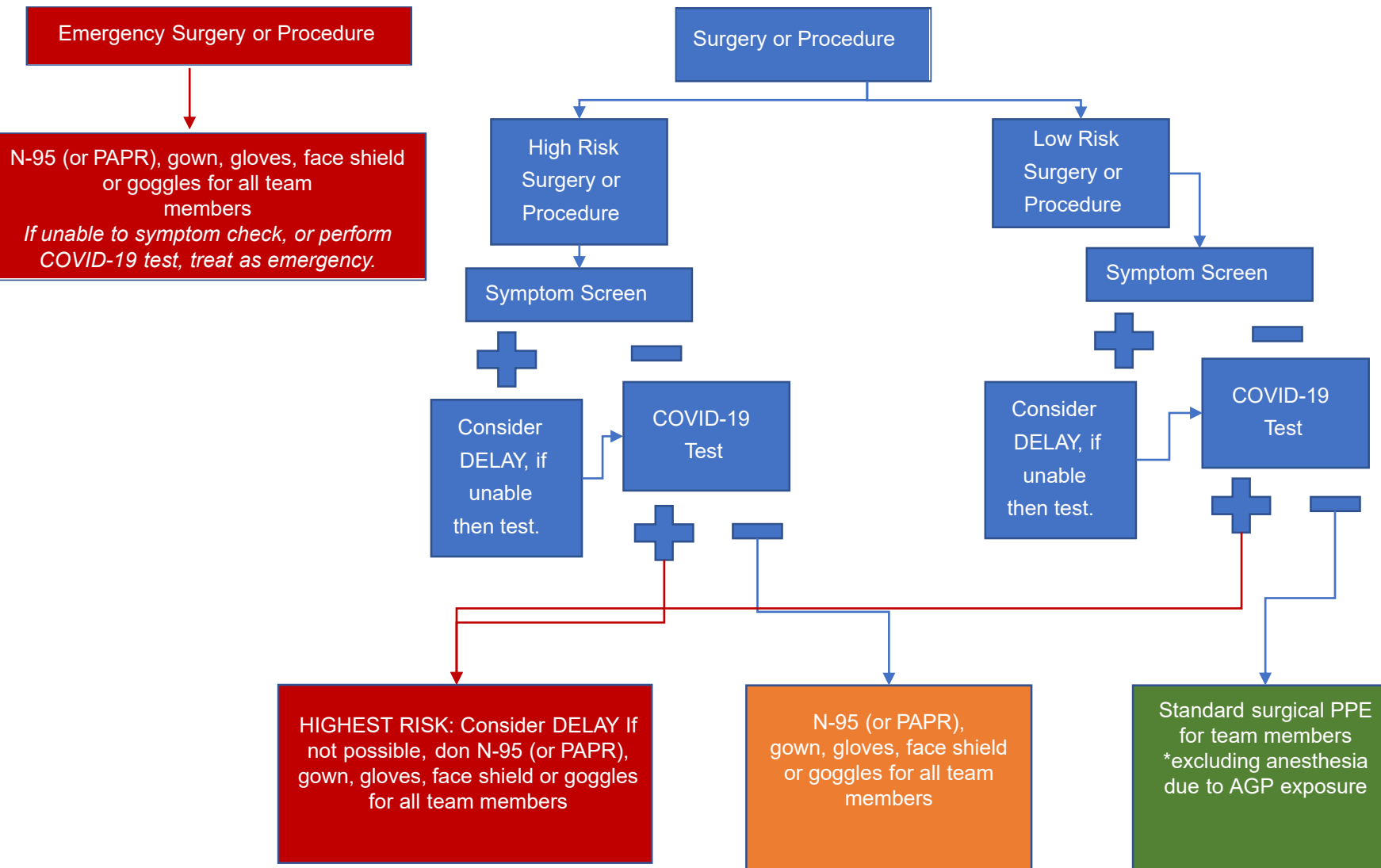


# COVID-19 Surgical / Procedural PPE Algorithm 4.23.2020 0900

Spectrum Health contact: Russ Lampen, MD \*Highlight denotes new content



- High-Risk Surgeries:**
- Any procedures on the airway, throat, mouth or sinuses (bronchoscopy, tracheostomy, glossectomy, laryngoscopy procedure, etc)
  - Surgery under regional anesthetic with high likelihood of requiring GA
  - Thoracic surgery/procedures
  - Emergency trauma surgery involving head, neck, or thorax
  - Emergency Cesarean section with intubation
  - Active CPR
- High-Risk Procedures:**
- Transesophageal echocardiograms (TEE)
  - EGD and colonoscopy
  - Interventional radiology procedures that been deemed aerosol generating procedures.
  - Bronchoscopy
  - Gastrointestinal (upper and lower)
  - Oral surgery
  - ENT procedures involving sinus or oropharyngeal regions

- Other:**
- **When pre-operative COVID-19 testing is not available, members of the team not wearing N95 must leave OR and wait outside for 15 minutes (based on 20 air exchange/hr with 99% air clearing). Where 15-minute wait could seriously hinder care follow “emergency” pathway.**
  - After completion of intubation or extubation, other team members can return and wear standard PPE (standard gown, eye protection, gloves).
  - Any team member donning PPE must have appropriate training
  - Follow [PPE conservation guidelines and processes](#) for reuse of N-95 masks

Algorithm adapted from Journal of the American College of Surgeon: [https://www.journalacs.org/article/S1072-7515\(20\)30303-3/pdf](https://www.journalacs.org/article/S1072-7515(20)30303-3/pdf)