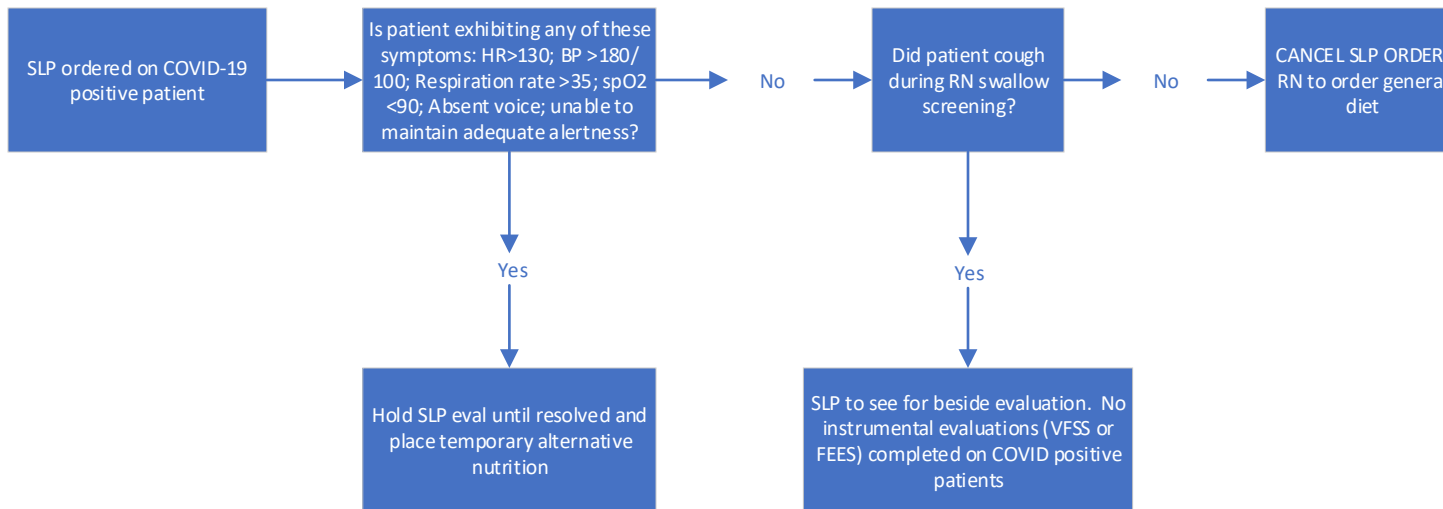
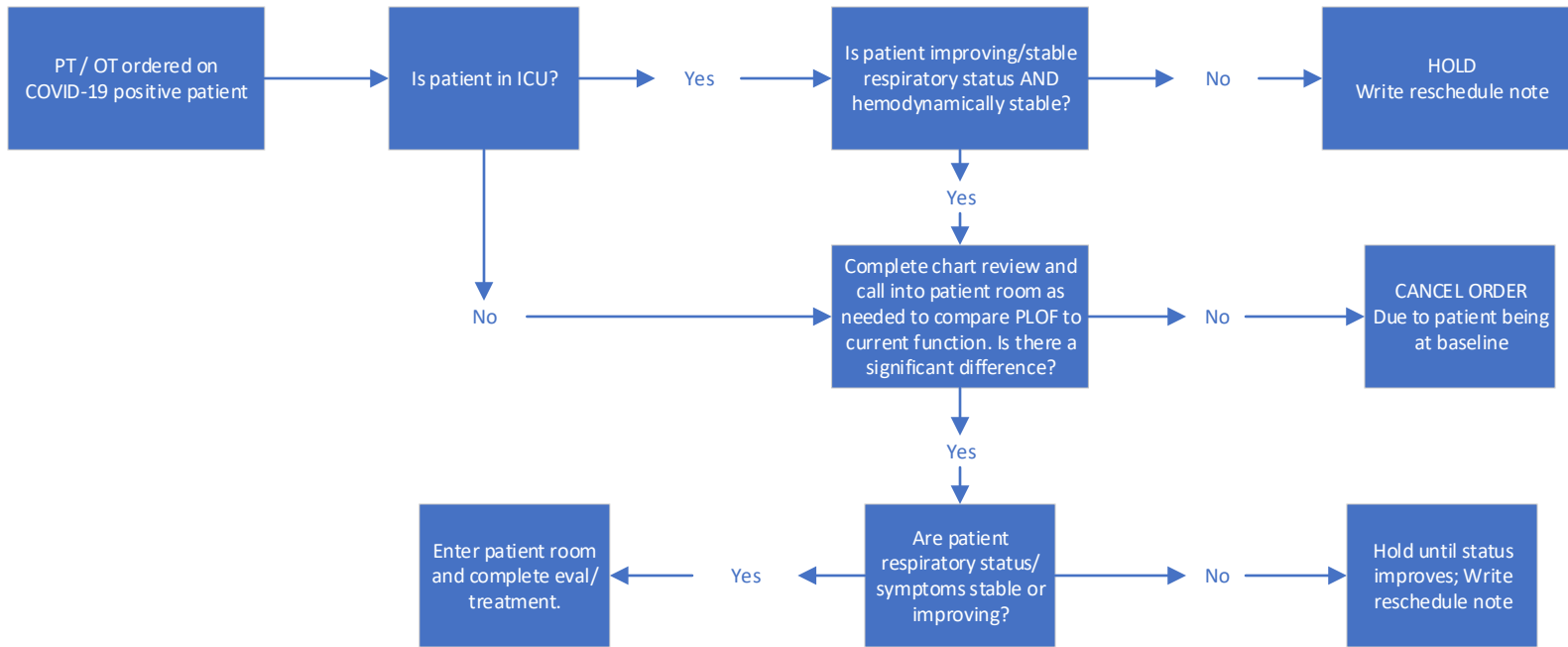


Hospital PT, OT, SLP Services – COVID-19 Algorithm



PUI (persons under investigation)

- PT/OT/SLP will reschedule patient until test results are confirmed
- This is to conserve unnecessary PPE and to make the most accurate recommendation based upon plan of care.
- Exception – SLP for patients who have been PUI for greater than 24 hours:
 - NPO w/o alternative form of nutrition
 - NPO w/o diet order
 - Treatment of NPO patients without alternative form of nutrition or diet order will be via bedside swallow study, not Instrumentation Assessment (VFSS, FEES).