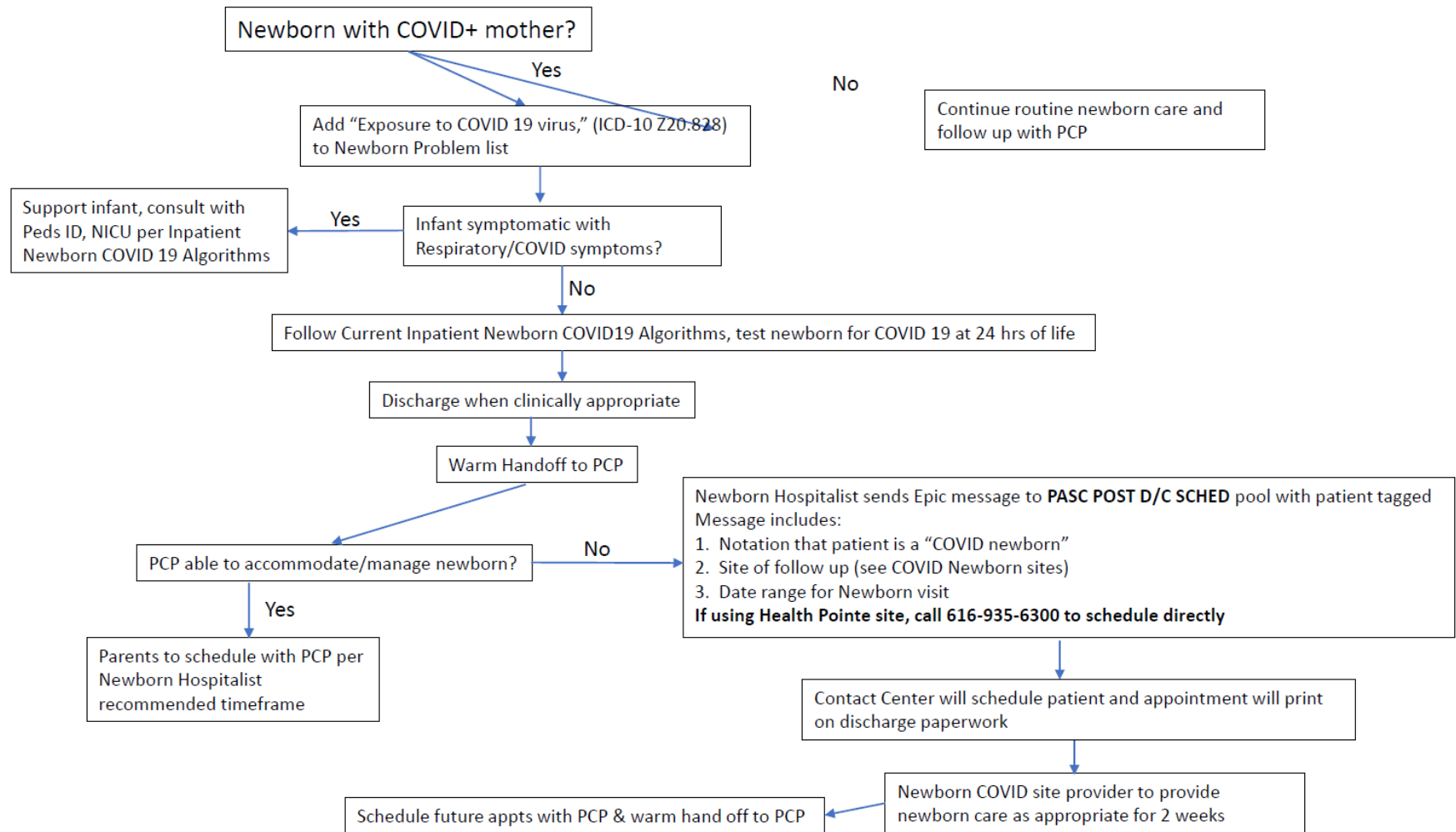


# Newborn COVID-19 Ambulatory Care – May 18, 2020 1509

Spectrum Health contact: Kristi Grzybowski



## Newborn COVID Sites by Region

### Northwest:

[Spectrum Health Ludington Hospital \(Family Medicine\) - Ludington](#)

922 Lawndale St  
Ludington, MI 49431  
(231)845-7380

[Spectrum Health Gerber Memorial Multispecialty Clinic - Fremont](#)

230 W Oak St  
Fremont, MI 49412-1575  
(231)924-4200

### Southwest:

[SHMG \(Georgetown\) Pediatrics – Hudsonville](#)

3152 Port Sheldon Rd Suite C  
Hudsonville, MI 49426  
(616)669-9238

[Health Pointe](#)

15100 Whittaker Way  
Grand Haven, MI 49417  
(616)935-6200

### Northeast:

[Spectrum Health United Hospital Internal Medicine, Pediatrics & Specialty Clinic](#)

707 S Greenville West Dr  
Greenville, MI 48838  
(616)754-3001

[Spectrum Health Big Rapids Hospital Family Medicine - Big Rapids](#)

650 Linden St Suite 1  
Big Rapids, MI 49307  
(231)796-3200

### Grand Rapids:

[SHMG Internal Medicine Pediatrics - Michigan Street](#)

426 Michigan St NE  
Grand Rapids, MI 49503  
(616)267-7888

**Patients will be seen in the Walk-in clinic space on the first floor**

### Southeast:

[Spectrum Health Pennock Family, Internal & Pediatric Medicine](#)

1108 W State St Suite 3  
Hastings, MI 49058  
(269)945-0922