

# N95 Tool Kit: Algorithms and Compliance 10.22.20 1232

Spectrum Health contact: Steve Mogridge and Brent Petersen \***Highlight**  
**denotes new content**

## **Situation**

Supply Chain has secured several types on N95 respirators. Some of these N95s are not intended for surgical/procedural areas. The PPE Integrated Workgroup has developed an algorithm and guide to help determine which respirators are appropriate for use.

## **Background**

Spectrum Health Supply Chain has worked to secure stock of different brands/models of N95 respirators due to the 3M shortage. Since there are several types of N95s, Occupational Health has established fit testing clinics to ensure proper fit of N95 respirators.

## **Assessment**

There is an abundant supply of N95s procured by Supply Chain. In order to provide enough N95s for team members, we must utilize appropriate N95s makes/models for all units to ensure that we have enough supply through the COVID-19 pandemic.






## **Recommendation**



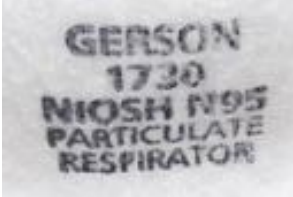
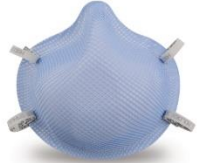

- The PPE Integrated Workgroup is asking that team members are fit tested and using N95 respirators appropriate for their area.
- Do not use N95s that have not been fit tested to a team member. Performing seal checks on N95s will no longer be an acceptable option, if the team member has not been fit tested to that specific make/model of N95.
- If your unit has stock of N95s not approved for your area, please send these back to Supply Chain.

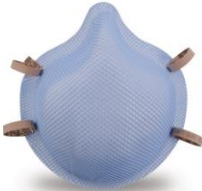


## **Included in this Tool Kit**

- N95 Respirator Usage Guidelines Table
- N95 Respirators, 3M Brand- What's the Difference?
- Non-Surgical Staff N95 Fit Testing Algorithm
- Surgical Staff N95 Fit Testing Algorithm
- RNC Staff N95 Fit Testing Algorithm
- PPE and Facial Hair

## N95 Respirator Usage Guidelines Table

Respirator Model	Description	Approved Usage
<p><b>3M 1860</b></p>  <p><small>3M™ Health Care Particulate Respirator and Surgical Mask 1860</small></p>	<ul style="list-style-type: none"> <li>▪ Dome-shaped</li> <li>▪ Blue-green</li> <li>▪ Stamped with “1860” on the front.</li> <li>▪ Regular fit</li> <li>▪ <b>Lawson # 651394</b></li> </ul>	<ul style="list-style-type: none"> <li>▪ <b>Fluid resistant</b></li> <li>▪ Approved for use in surgical and procedural areas</li> </ul>
<p><b>3M 1860S</b></p> 	<ul style="list-style-type: none"> <li>▪ Dome-shaped</li> <li>▪ Blue-green</li> <li>▪ Stamped with “1860<b>S</b>” on the front.</li> <li>▪ Smaller fit</li> <li>▪ <b>Lawson # 651395</b></li> </ul>	<ul style="list-style-type: none"> <li>▪ <b>Currently in use for Surgical Services only</b></li> <li>▪ May use in other patient care areas as supplies allow</li> </ul>
<p><b>3M 8210</b></p> 	<ul style="list-style-type: none"> <li>▪ Dome shaped</li> <li>▪ White</li> <li>▪ Stamped with “3M 8210” on the front.</li> <li>▪ Universal fit</li> <li>▪ <b>Lawson # 654150</b></li> </ul>	<ul style="list-style-type: none"> <li>▪ Approved for use in non-surgical/non-procedural areas</li> </ul>
<p><b>3M 8210 Plus</b></p> 	<ul style="list-style-type: none"> <li>▪ Dome shaped</li> <li>▪ White</li> <li>▪ Stamped with “3M 8210 plus on the front.</li> <li>▪ Universal fit</li> <li>▪ <b>Lawson # 654150</b></li> </ul>	<ul style="list-style-type: none"> <li>▪ Face shield required when splash anticipated</li> </ul>
<p><b>3M 9205+</b></p> 	<ul style="list-style-type: none"> <li>▪ White</li> <li>▪ Three panels</li> <li>▪ Stamped with “9205+” on the front. Universal fit</li> <li>▪ Universal fit</li> <li>▪ <b>Lawson # 654898</b></li> </ul>	<ul style="list-style-type: none"> <li>▪ Approved for use in non-surgical/non-procedural areas</li> <li>▪ Face shield required when splash anticipated</li> </ul>

<p><b>Makrite</b></p> 	<ul style="list-style-type: none"> <li>▪ Dome shaped</li> <li>▪ White</li> <li>▪ Stamped with "Makrite 9500-N95" on the front.</li> <li>▪ Universal fit</li> <li>▪ <b>Lawson # 139485</b></li> </ul>	<ul style="list-style-type: none"> <li>▪ <b>Fluid resistant</b></li> <li>▪ <b>Currently for use on Surgical Services only</b></li> <li>▪ Approved for use in surgical and procedural areas</li> </ul>
<p><b>Gerson 1730</b></p>  	<ul style="list-style-type: none"> <li>▪ Dome shaped</li> <li>▪ White</li> <li>▪ Stamped with "Gerson 1730" on the front.</li> <li>▪ Universal fit</li> <li>▪ <b>Lawson # 139486</b></li> </ul>	<ul style="list-style-type: none"> <li>▪ <b>Currently unavailable to order</b></li> <li>▪ <b>Fluid resistant</b></li> <li>▪ <b>Currently for use on Surgical Services only</b></li> <li>▪ Approved for use in surgical and procedural areas</li> </ul>
<p><b>Moldex 1511 (Small)</b></p>  <p><b>Moldex 1512 (Medium)</b></p> 	<ul style="list-style-type: none"> <li>▪ Dome shaped</li> <li>▪ Molded nose</li> <li>▪ Light blue</li> <li>▪ Has WHITE straps</li> <li>▪ Small - typed on top strap</li> <li>▪ <b>Lawson # 138928</b></li> </ul> <ul style="list-style-type: none"> <li>▪ Dome shaped</li> <li>▪ Molded nose</li> <li>▪ Light blue</li> <li>▪ Has LIGHT BLUE straps</li> <li>▪ Medium - typed on top strap</li> <li>▪ <b>Lawson # 138927</b></li> </ul>	<ul style="list-style-type: none"> <li>▪ <b>Fluid resistant</b></li> <li>▪ Approved for use in surgical and procedural areas</li> <li>▪ <b>Currently for use on Surgical Services only</b></li> <li>▪ May use in other patient care areas as supplies allow</li> </ul>

<p><b>Moldex 1513 (Large)</b></p> 	<ul style="list-style-type: none"> <li>▪ Dome shaped</li> <li>▪ Molded nose</li> <li>▪ Light blue</li> <li>▪ Has TAN straps</li> <li>▪ Large - typed on top strap</li> <li>▪ <b>Lawson # 138926</b></li> </ul>	
<p><b>Uniair</b></p> 	<ul style="list-style-type: none"> <li>▪ Peaked Dome shape</li> <li>▪ White</li> <li>▪ Stamped with "SH3500" on front</li> <li>▪ Universal fit</li> <li>▪ <b>Lawson # 640125</b></li> </ul>	<ul style="list-style-type: none"> <li>▪ Approved for use in non-surgical/non-procedural areas</li> <li>▪ Face shield required when splash anticipated</li> </ul>
<p><b>Dasheng</b></p> 	<ul style="list-style-type: none"> <li>▪ Dome shaped</li> <li>▪ White</li> <li>▪ Stamped with "DTC3W" on front</li> <li>▪ Universal fit</li> <li>▪ <b>Lawson # 640124</b></li> </ul>	<ul style="list-style-type: none"> <li>▪ Approved for use in non-surgical/non-procedural areas</li> <li>▪ Face shield required when splash anticipated</li> </ul>

## N95 Respirators, 3M Brand- What's the Difference?

*Spectrum Health is planning to utilize multiple versions of 3M brand N95 respirators to support staff safety.*

- 3M produces both industrial (9205+ and 8210+) and medical (1870+ and 1860) N95 respirators.
- The particulate filtration efficiency with all versions is identical.
- Respirators appear similar. They are identified by the information printed on the front.

### 3M 9205+ and 8210+



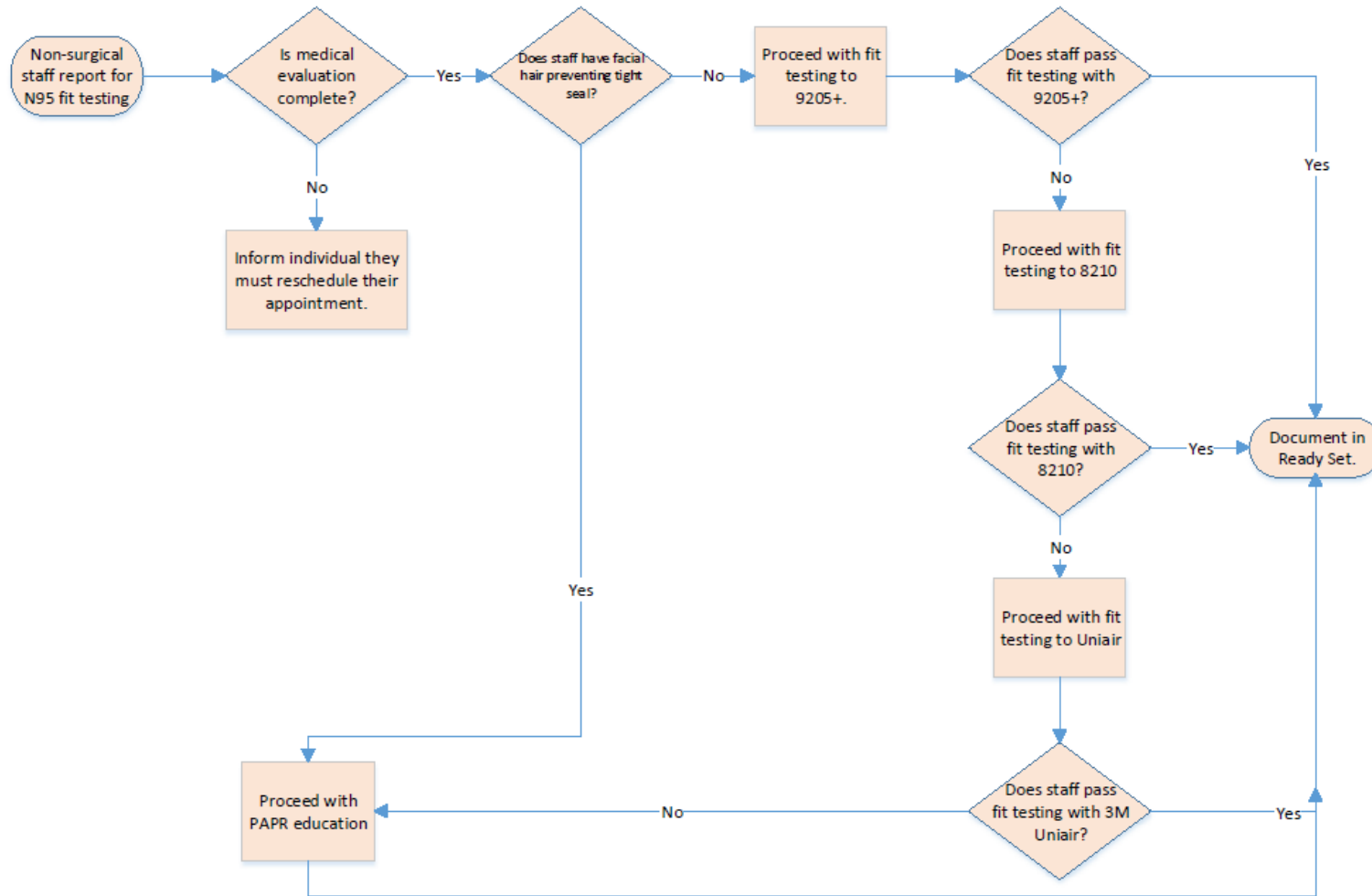
- The 3M 9205+ and 8210+ are **NOT** approved for use in surgery or procedural areas due to **anticipated splash risk** due to lack of a fluid barrier.
- If splash is anticipated with the 3M 9205+ or 8210+, staff should don a face shield.

### 3M 1870+ and 1860



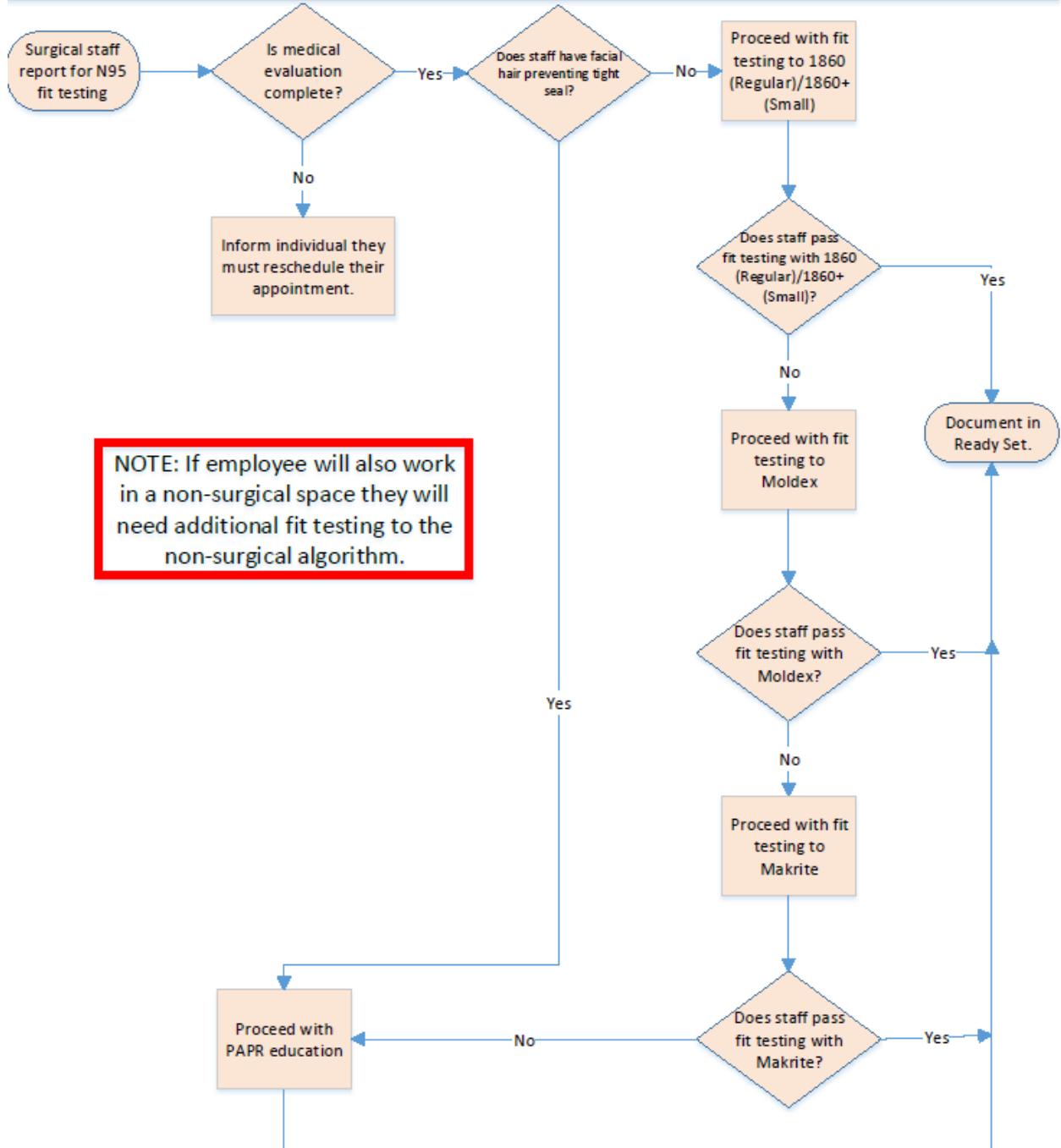
- Due to extremely limited quantity, 3M 1870+ and 1860 will be sequestered for surgery and procedural spaces due to anticipated splash risk.
- 1870+ and 1860 may be available for non-surgery/procedural area staff until they can be fit tested to a non-surgical grade N95 respirator (ex. Uniair, Dasheng, etc brands).

### Non-Surgical Staff N95 Fit Testing Algorithm

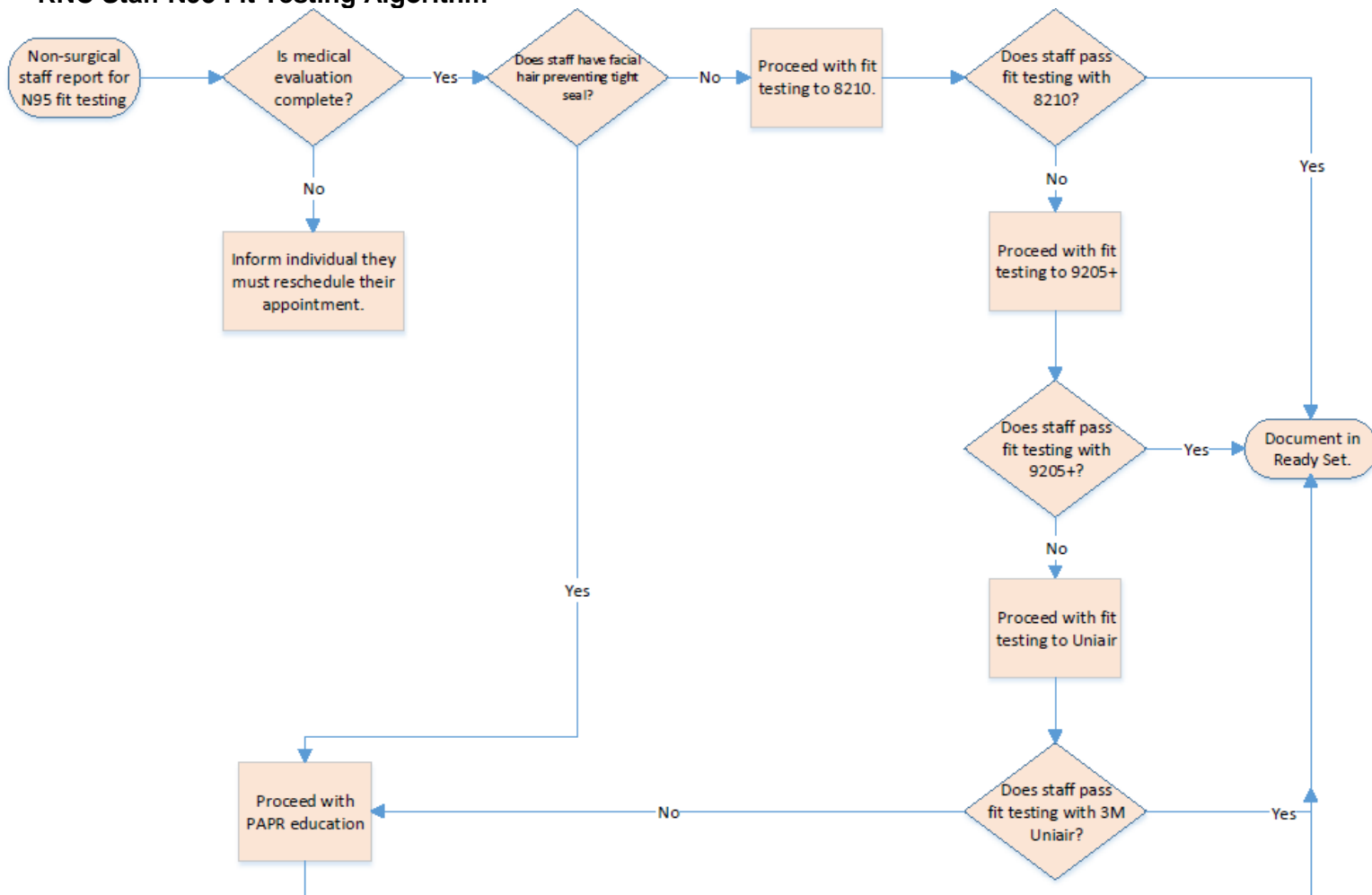


Revision Date: 10/8/2020

### Surgical Staff Fit Testing Algorithm



### RNC Staff N95 Fit Testing Algorithm



Revision Date: 10/8/2020



## PPE and Facial Hair

The PPE Integrated Workgroup recommends for those working in at-risk areas to consider shaving. Recommendation apply to individuals who do not have a strong cultural or religious reason for facial hair. The presence of facial hair compromises the ability of the mask to fully protected you:

- Certain facial hair, stubble, mustaches and beards – make it impossible to get a good seal of a mask to the face.
- Respirators rely on a good seal against the face so when you breathe air in it is drawn into the filter material where the air is cleaned.
- If there are gaps around the edges of the mask, ‘dirty’ air will pass through these gaps and into your lungs.
- Traditionally, other styles of respirators have been available for team members with facial hair that need protection, but **due to COVID-19, the PAPR/ CAPR and their filters are in short supply.**

Team members can schedule a fit testing appointment by calling the Employee Health Event Team Hotline at 616.486.5544 or 1.877.548.3871 or email the Employee Health Services Event Team at [healthassessments@spectrumhealth.org](mailto:healthassessments@spectrumhealth.org).

The CDC recommends the following facial hair styles:

