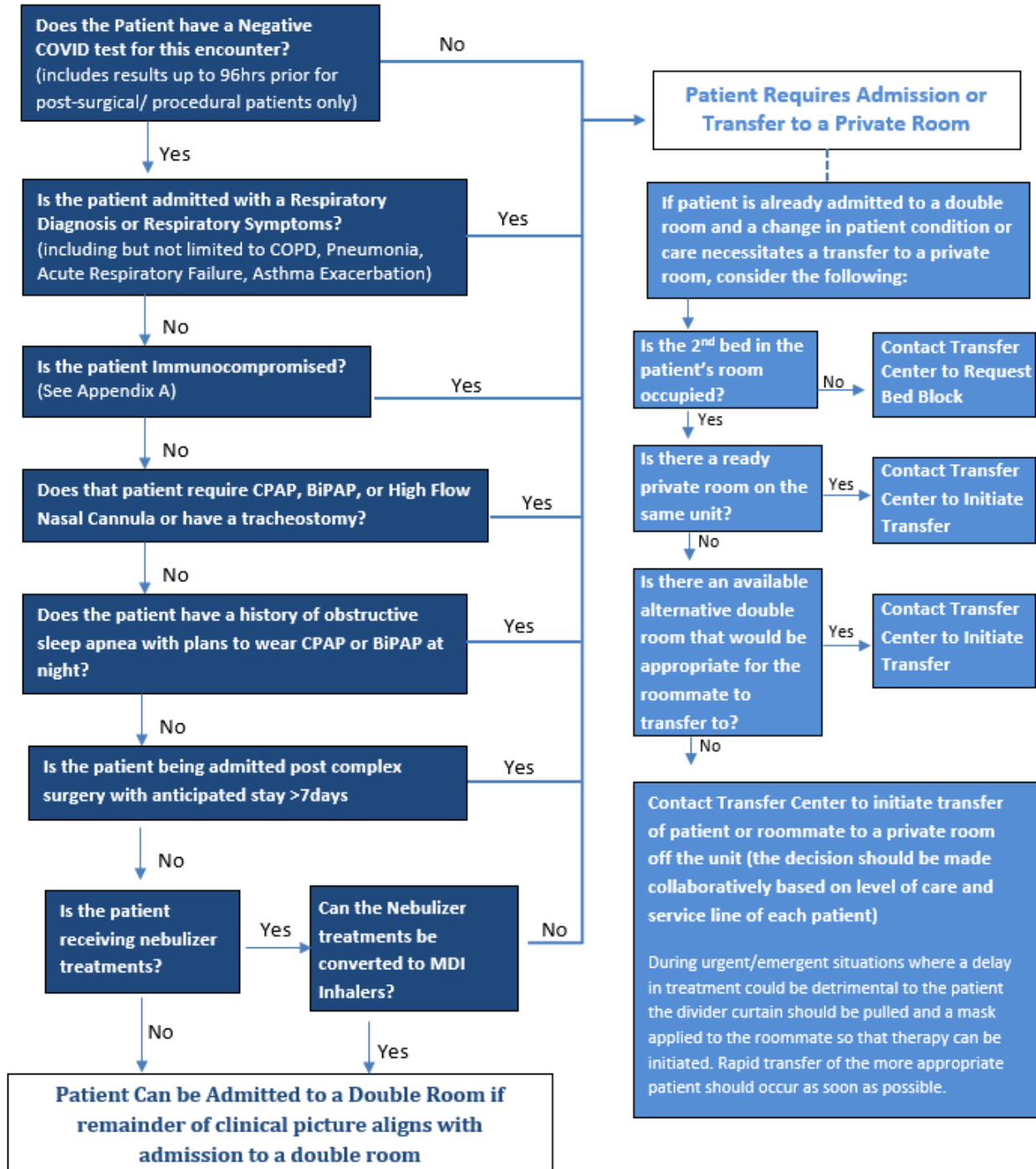


COVID-19: Double Room Patient Placement Algorithm 9.23.20 1400

Spectrum Health contact: Jessica Pratt ***Highlight denotes new content**



Appendix A: Immunocompromised Inclusion Criteria

For the purposes of this algorithm, immunocompromised patients are those that have:

- History of solid organ or bone marrow transplant
- Cancer undergoing chemotherapy
- Primary immunodeficiency (Contact Nick Hartog, MD for help)
- HIV infection
- Immunosuppressive medications (Listed Below)

Immunosuppressive Medications

Steroids:

- Prednisone ≥ 20 mg/day for at least 14 days (or the equivalent of prednisone, dexamethasone, solumedrol, methylprednisone, and deflazacort, see UpToDate comparison chart)
- Corticotropin (ACTH)

Monoclonal antibodies:

- Anakinra (Kineret)
- Basiliximab (Simulect)
- Canakinumab (Ilaris)
- Natalizumab (Tysabri)
- Obinutuzumab (Gazyva)
- Ofatumumab (Arzera)
- Rituximab (Rituxan, Ruxience, Truxima)
- Tocilizumab (Actemra)
- Ustekinumab (Stelera)
- Vedolizumab (Entyvio)

TNF inhibitors:

- Infliximab (Remicade)
- Etanercept (Enbrel)
- Adalimumab (Humira)
- Certolizumab (Cimzia)
- Golinumab (Simponi)

Miscellaneous:

- Abatacept (Orencia)
- Antithymocyte globulin (Thymoglobulin)
- Azathioprine (Imuran) >50 mg/day
- Belatacept (Nulojix)
- Cyclosporine (Gengraf, Neoral, Sandimmune)
- Cyclophosphamide
- Everolimus (Afintor, Zortess)
- Methotrexate (Otrexup, Rasuvo, Rheumatrex, Trexall, Xatmep) ≥ 0.4 mg/kg/week
- Mycophenolate mofetil (Sandoz)
- Sirolimus (Rapamune)
- Tacrolimus (Astagraf, Envarsus, Prograf)