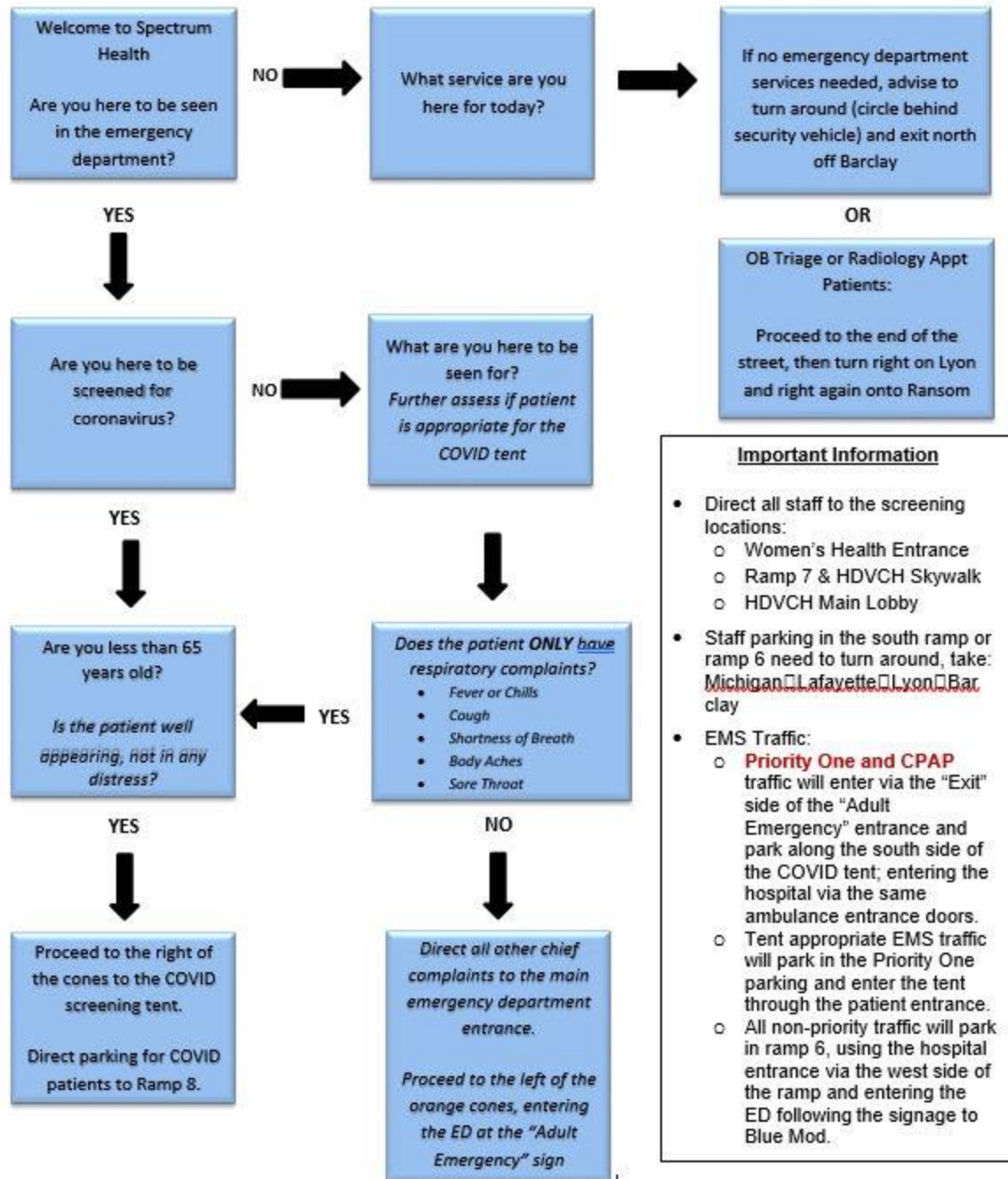


RN Scripting for Butterworth ED Barclay Street (First Checkpoint) – March 20, 2020



Important Information

- Direct all staff to the screening locations:
 - Women's Health Entrance
 - Ramp 7 & HDVCH Skywalk
 - HDVCH Main Lobby
- Staff parking in the south ramp or ramp 6 need to turn around, take: Michigan □ Lafayette □ Lyon □ Barclay
- EMS Traffic:
 - **Priority One and CPAP** traffic will enter via the "Exit" side of the "Adult Emergency" entrance and park along the south side of the COVID tent; entering the hospital via the same ambulance entrance doors.
 - Tent appropriate EMS traffic will park in the Priority One parking and enter the tent through the patient entrance.
 - All non-priority traffic will park in ramp 6, using the hospital entrance via the west side of the ramp and entering the ED following the signage to Blue Mod.